

## PARTS LIST AND INSTRUCTIONS

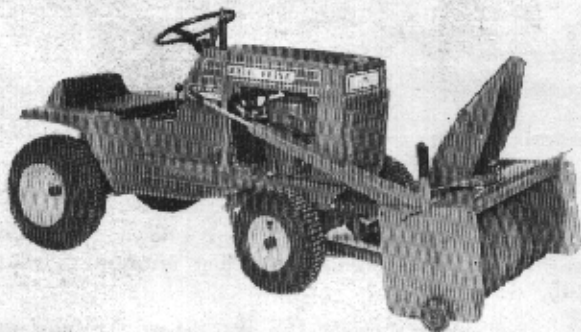


*Wheel Horse*

WHEELHORSE PRODUCTS, INC. • SOUTH BEND, IND.

## SNOW THROWER

MODEL  
**6-3251**



### DESCRIPTION

This 32" Snow Thrower is designed to fit Lawn Ranger 1969-1970 tractors. All parts required for assembly and installation are contained in the shipping carton.

### ASSEMBLY AND MOUNTING

Remove all parts from the carton and place on a clean flat surface.

1. Mount the frame arm assembly to the snow thrower body using four  $\frac{3}{8}$ -16 x 1" bolts and nuts (figure 1).

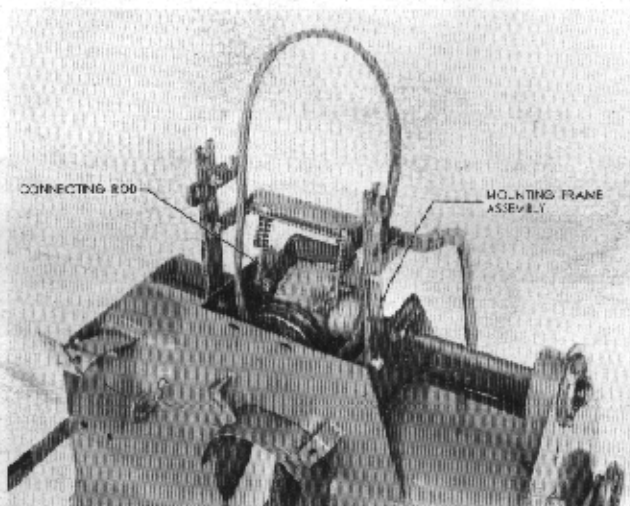


FIGURE 1

Attach the connecting rods to the gear box support with  $\frac{1}{8}$  x  $\frac{3}{4}$  cotter pins as shown.

2. Install the belt guide studs to the blower frame (figure 2). **Note:** The bends must be facing out as shown. Secure in place with the  $\frac{1}{4}$ -20 Esllok nuts.

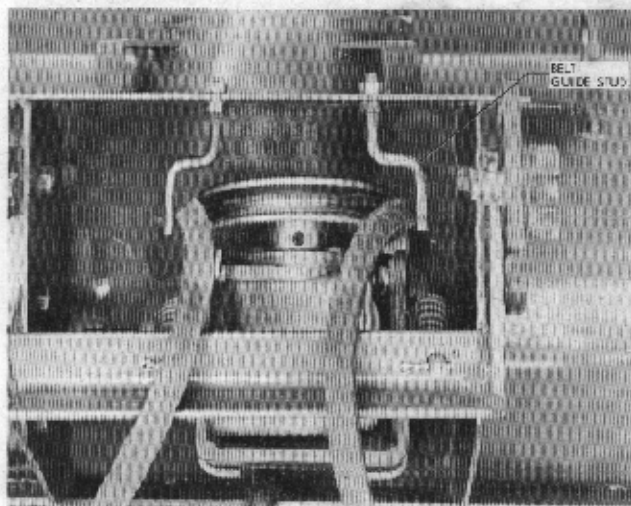


FIGURE 2

3. Mount the belt guide to the tractor as shown in figure 3, using the existing bolts and washers to secure it in place.

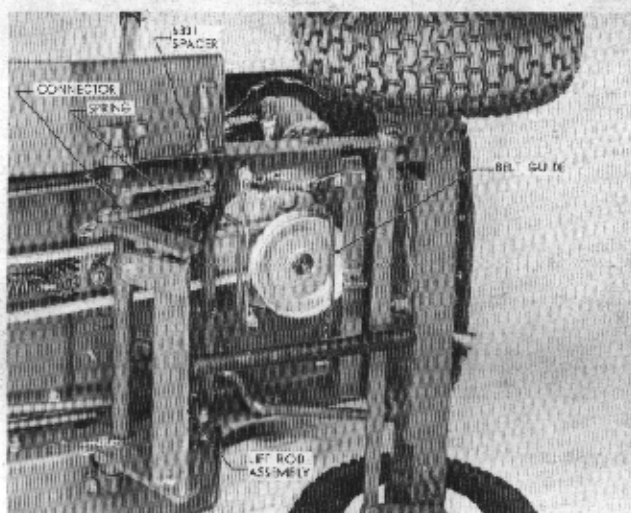


FIGURE 3

To install the lift rod assembly, hook the connectors on the lift arm cross shaft (figure 3), and bolt the connectors to the tractor lift arms. **Note:** A spacer #6331 is used between the connectors and the tractor lift arms as shown.

Connect the spring from the lift rod assembly to the square tractor support shaft. Tighten the spring adjusting nut until  $\frac{1}{4}$ " of thread is exposed above the nut.

4. Remove the clevis pins from the frame latches. Engage the slots of the frame arms with the tractor mounting rods (figure 4). Swing the latches down and secure with clevis pins and hairpin cotters.

Connect the lift tube to the snow blower with the  $\frac{5}{8}$ " washer and the  $\frac{1}{8}$  x  $\frac{3}{4}$  Cotter pin.

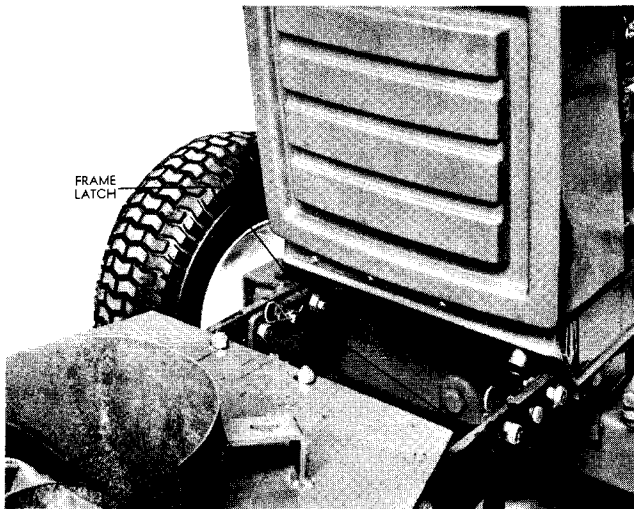


FIGURE 4

5. Remove the trunnion from the tractor clutch arm and replace it with the double studded trunnion provided. Connect the clutch link to the trunnion as shown in figure 5.

Thread the trunnion in or out on the tractor clutch arm to adjust the belt tension. It is properly adjusted if the springs compress from  $\frac{1}{8}$ " to  $\frac{3}{16}$ " when the clutch is engaged.

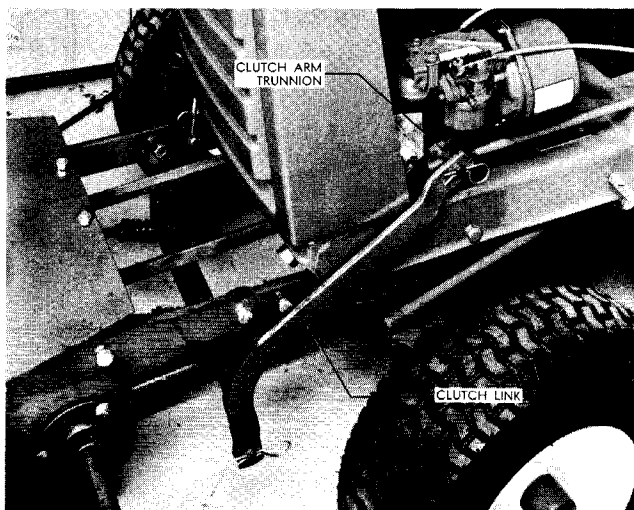


FIGURE 5

6. Remove the front shroud rollers and install the shroud (figure 6).

Move the back rollers in or out to adjust the shroud to turn freely.

Insert the crank through the crank support and secure with two  $\frac{1}{2}$ " washers and  $\frac{1}{8}$ " x  $\frac{3}{4}$ " cotter pins.

#### CABLE WRAPPING INSTRUCTIONS

1. Face the shroud to the right (figure 6).

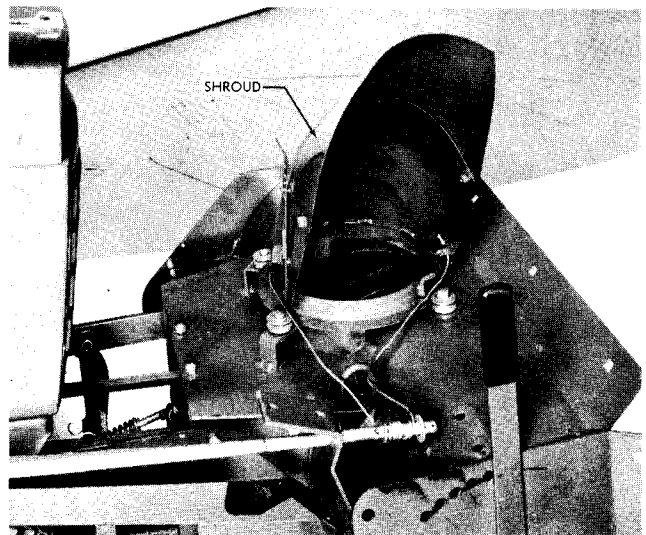


FIGURE 6

2. Thread cable end "A" up under the double speed nut and tighten screws just enough to retain cable.

3. Pull cable around the shroud and thread end "B" of cable through hole #1 then back through hole #2 in crank and then wrap seven (7) complete turns in direction shown in figure 7. Finish last turn on top of crank. Pull cable end "B" behind the hook on the wrapper assembly and thread up under the double speed nut. Retighten screws just enough to retain cable.

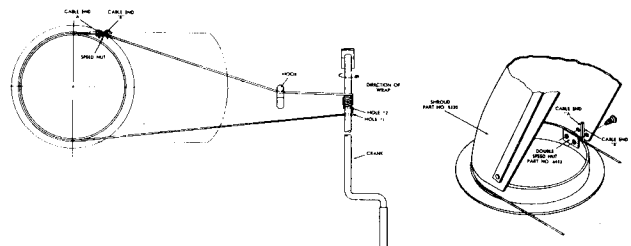


FIGURE 7

4. Attach the crank support assembly to the blower housing and line up the holes in the crank support with the two holes in the blower housing and the two holes in the bracket. A reinforcing plate is used to support the assembly to the blower housing as shown in figure 8 and the exploded view drawing.

5. Face shroud forward and grip both ends of cable with pliers and pull until cable is tight. Tighten screws in speed nut securely.

The adjustable shroud allows the operator to control the direction the snow may be thrown by turning the convenient pivot crank. The upper part of the snow shroud is adjustable to deflect the snow in an upward or downward direction depending upon conditions. There are wheels on each side for raising or lowering to prevent the Snow Thrower from catching on uneven surfaces. Under some conditions it will be necessary to coat the auger, shroud and the inside with paraffin or wax to prevent snow and ice from sticking. Best results are obtained with slow forward

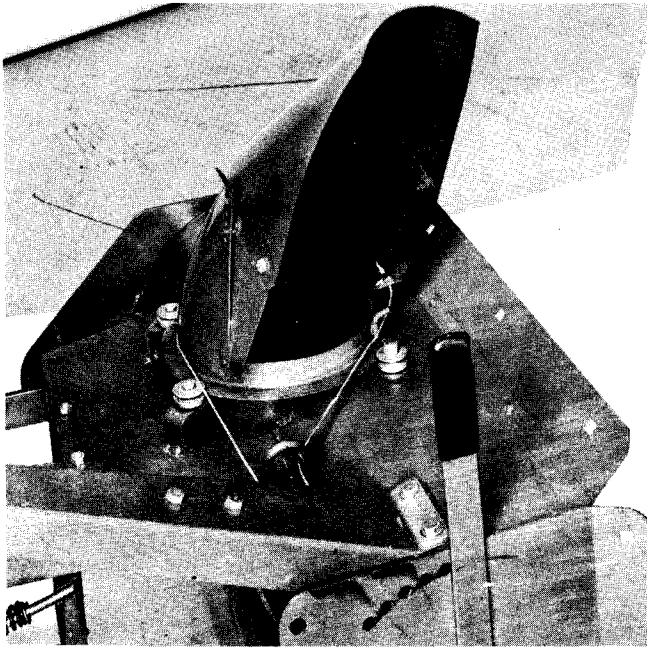


FIGURE 8

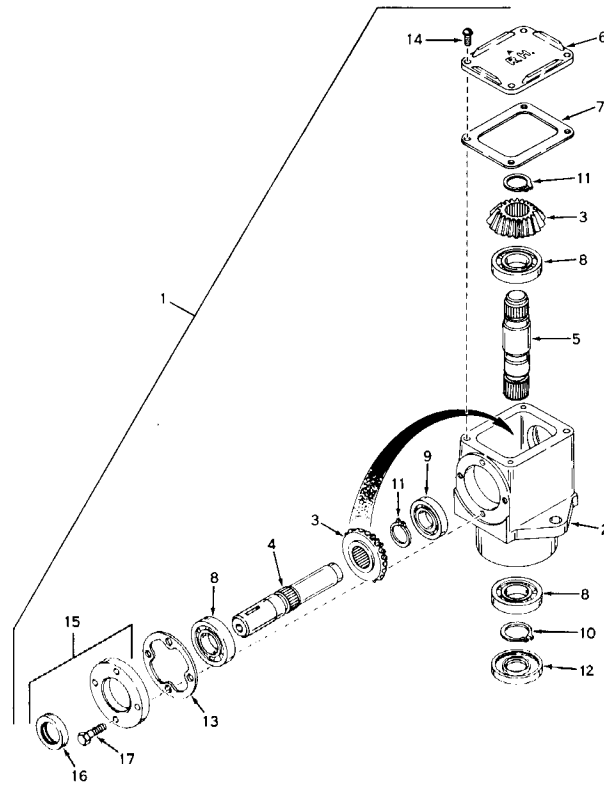
movement of the tractor and high auger speed, therefore under normal conditions the tractor should be operated in first gear with full throttle. On automatic drive tractors the speed should be about one m.p.h. Engage clutch gently, do not snap into engagement.

Always shut off engine before making any adjustment or lubrication.

After the first hour of use recheck all bolts, nuts, and set screws — tighten securely. Check chains and belt alignment. Keep children and pets away while operating, there may be rocks or metal in the snow which could be thrown forward or out the chute. Never permit anyone to stand in front of blower when engine is running.

### LUBRICATION

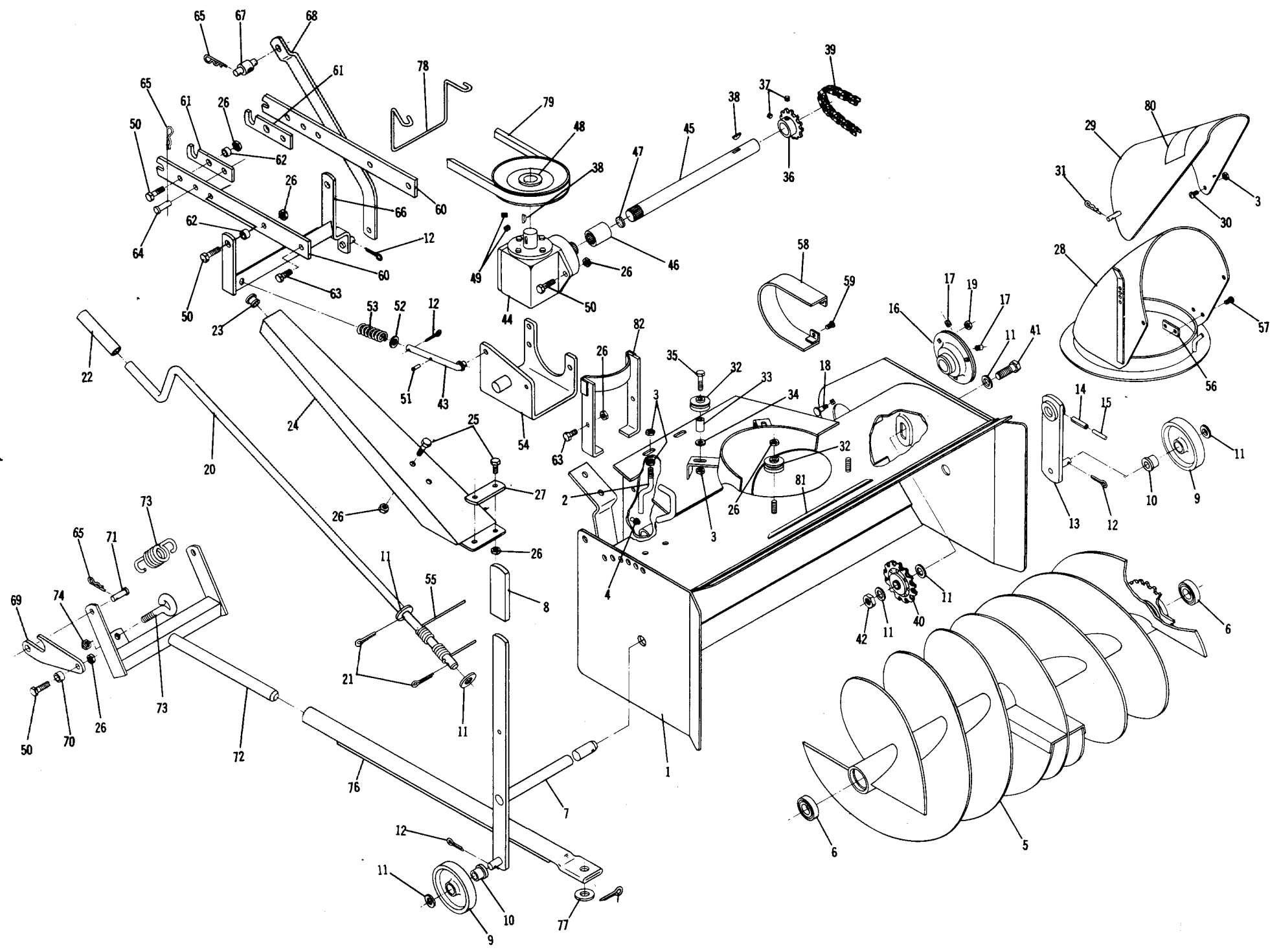
The drive chain should be oiled with a light grade of machine oil. All other bearings and movable parts should be oiled frequently. In storing the Snow Thrower, it is advisable to coat the auger with a heavy machine oil to prevent rust.



### GEAR BOX PARTS LIST

When ordering parts always list Part No. and name of part.  
Parts available only through Authorized Dealers.  
(Specifications subject to change without notice.)

Item No.	Part No.	Description	No. Req'd.	Item No.	Part No.	Description	No. Req'd.
1	100154	Gear Box Complete	1	10	936128	Snap Ring	1
2	100520	Housing — Gear Box	1	11	936127	Snap Ring	2
3	100521	Gear	2	12	100527	Oil Seal	1
4	100522	Shaft — Input	1	13	100528	Gasket	1
5	100531	Shaft — Output	1	14	910333-4	10-24 x 1/2 Pan Head Screw	4
6	100523	Cover — Right Hand	1	15	100529	Cap and Seal Complete	1
7	100524	Gasket — Cover	1	16	100530	Oil Seal	1
8	100525	Ball Bearing	3	17	908004-4	1/4-20 x 7/8 Hex Bolt	4
9	100526	Ball Bearing	1				



# PARTS LIST

## SNOW THROWER — 6-3251

When ordering parts always list Part No. and name of Part.

Parts available only through Authorized Dealers.

(Specifications subject to change without notice.)

Item No.	Part No.	Description	No. Req'd.	Item No.	Part No.	Description	No. Req'd.
1	100070	Wrapper Assembly	1	42	915115-6	Nut — Eslok $\frac{1}{2}$ -13	1
2	100273	Stud — Belt Guide	2	43	100318	Connecting Rod	2
3	915111-6	Nut — Eslok $\frac{1}{4}$ -20	9	44	100154	Gear Box — Complete	1
4	MW-1455	Grease Fitting	1	45	100067	Shaft — Output Connector	1
5	2172	Auger	1	46	100155	Coupling	1
6	5493	Bearing	2	47	100132	Felt Disc	1
7	5155	Auger Shaft	1	48	100128	Pulley "B" Section	1
8	5359	Grip	1	49	909861-5	Set Screw $\frac{5}{16}$ -18 x $\frac{1}{4}$	2
9	1987	Wheel	1	50	908035-4	Bolt $\frac{3}{8}$ -16 x $1\frac{1}{4}$	8
10	1974	Bushing — Nylon	1	51	933156-4	Spirol Pin $\frac{1}{8}$ x 1	2
11	920011-4	Washer $\frac{1}{2}$ SAE	7	52	920009-4	Washer $\frac{3}{8}$ SAE	2
12	932016-4	Cotter Pin $\frac{1}{8}$ x $\frac{3}{4}$	7	53	100160	Spring	2
13	5157	Wheel Support	1	54	100062	Gear Box Support	1
14	933215	Roll Pin $\frac{1}{4}$ x $1\frac{1}{4}$	1	55	4795	Cable	1
15	933173	Roll Pin $\frac{5}{32}$ x $1\frac{1}{4}$	1	56	6433	Speed Nut — Double #10	1
16	100038	Flanged Ball Bearing	2	57	926372-4	Screw #10-16 x $\frac{1}{2}$ Pan Head	2
17	909862-5	Set Screw — Nylok $\frac{5}{16}$ -18 x $\frac{5}{16}$	4	58	8672	Guard — Outer	1
18	900037-4	Bolt Carriage $\frac{5}{16}$ -18 x $\frac{3}{4}$	6	59	1391	Screws — Sems $\frac{1}{4}$ -20 x $\frac{3}{8}$	2
19	915112-6	Nut — Eslok $\frac{5}{16}$ -18	6	60	100048	Arm	2
20	8652	Crank	1	61	100049	Latch	2
21	932034-4	Cotter Pin $\frac{1}{8}$ x $\frac{3}{4}$	4	62	100283	Spacer	4
22	4569	Tube — Rubber	1	63	908034-4	Bolt Hex $\frac{3}{8}$ -16 x 1	4
23	5982	Bushing — Nylon	1	64	932963-4	Clevis Pin $\frac{3}{8}$ x 1	2
24	9039	Support — Crank	1	65	933505-4	Hairpin	3
25	908031-4	Bolt Hex $\frac{3}{8}$ -16 x $\frac{5}{8}$	4	66	100064	Hanger	1
26	915113-6	Nut — Eslok $\frac{3}{8}$ -16	18	67	100051	Trunnion — Double	1
27	7494	Bar — Reinforcing	1	68	100053	Link — Clutch	1
28	5220	Shroud	1	69	100094	Connector	2
29	2165	Deflector	1	70	6331	Spacer	2
30	910836-4	Bolt Pan Head $\frac{1}{4}$ -20 x $\frac{1}{2}$	2	71	932961-4	Clevis Pin $\frac{3}{8}$ x $\frac{3}{4}$	2
31	933503-4	Hairpin	1	72	100097	Lift Rod Assembly	1
32	1973	Roller	4	73	100077	Eye Bolt	1
33	2163	Spacer	2	74	915663-4	Nut — Elastic Stop $\frac{3}{8}$ -16	1
34	920007-4	Washer	2	75	8594	Spring — Counter Balance	1
35	908006-4	Bolt Hex $\frac{1}{4}$ -20 x $1\frac{1}{4}$	2	76	100101	Lift Tube	1
36	100057	Sprocket — 12 Tooth	1	77	920013-4	Washer $\frac{5}{8}$ SAE	1
37	909848-5	Set Screw $\frac{1}{4}$ -20 x $\frac{1}{4}$	2	78	100141	Guide — Belt	1
38	937014	Key #9 Woodruff	2	79	100129	Belt	1
39	100063	Chain	1	80	7637	Decal — Safety First	1
40	2174	Sprocket Idler	1	81	5604	Decal — Attachment	1
41	908060-4	Bolt Hex $\frac{1}{2}$ -13 x $1\frac{3}{4}$	1	82	100405	Belt Guide	1